

# GOSPEL TIME

## 1. Go Down Mozes

arr. Wim Stalman

### Introduction

Musical notation for the introduction of 'Go Down Mozes'. It consists of a single staff in treble clef with a common time signature. The melody starts with a quarter rest, followed by a series of quarter notes: G4, A4, B4, C5, B4, A4, G4. There are two measures of rests. The first measure has a *mf* dynamic marking, and the second measure has a *f* dynamic marking.

6

### Choral

Musical notation for the first line of the choral part of 'Go Down Mozes'. It consists of a single staff in treble clef with a common time signature. The melody starts with a quarter rest, followed by a series of quarter notes: G4, A4, B4, C5, B4, A4, G4. There are two measures of rests.

13

Musical notation for the second line of the choral part of 'Go Down Mozes'. It consists of a single staff in treble clef with a common time signature. The melody starts with a quarter rest, followed by a series of quarter notes: G4, A4, B4, C5, B4, A4, G4. There are two measures of rests.

20

Musical notation for the third line of the choral part of 'Go Down Mozes'. It consists of a single staff in treble clef with a common time signature. The melody starts with a quarter rest, followed by a series of quarter notes: G4, A4, B4, C5, B4, A4, G4. There are two measures of rests.

## 2. Swing Low

arr. André Waignein

### Introduction

Musical notation for the introduction of 'Swing Low'. It consists of a single staff in treble clef with a common time signature. The melody starts with a quarter rest, followed by a series of quarter notes: G4, A4, B4, C5, B4, A4, G4. There are two measures of rests. The first measure has a *mf* dynamic marking. There are two slurs under the notes.

### Choral

6

Musical notation for the first line of the choral part of 'Swing Low'. It consists of a single staff in treble clef with a common time signature. The melody starts with a quarter rest, followed by a series of quarter notes: G4, A4, B4, C5, B4, A4, G4. There are two measures of rests.

11

Musical notation for the second line of the choral part of 'Swing Low'. It consists of a single staff in treble clef with a common time signature. The melody starts with a quarter rest, followed by a series of quarter notes: G4, A4, B4, C5, B4, A4, G4. There are two measures of rests.

16

Musical notation for the third line of the choral part of 'Swing Low'. It consists of a single staff in treble clef with a common time signature. The melody starts with a quarter rest, followed by a series of quarter notes: G4, A4, B4, C5, B4, A4, G4. There are two measures of rests.

### 3. Nobody Knows

arr. Wim Stalman

#### Introduction

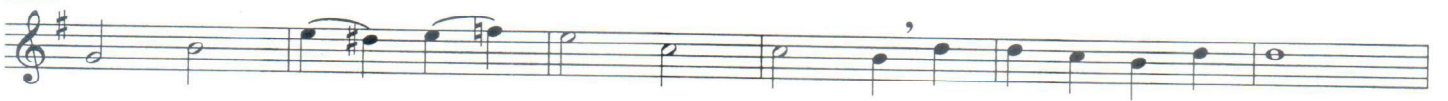


7

#### Choral



13



19



### 4. He's Got The Whole World

arr. Wim Stalman

#### Introduction



5

#### Choral



9

